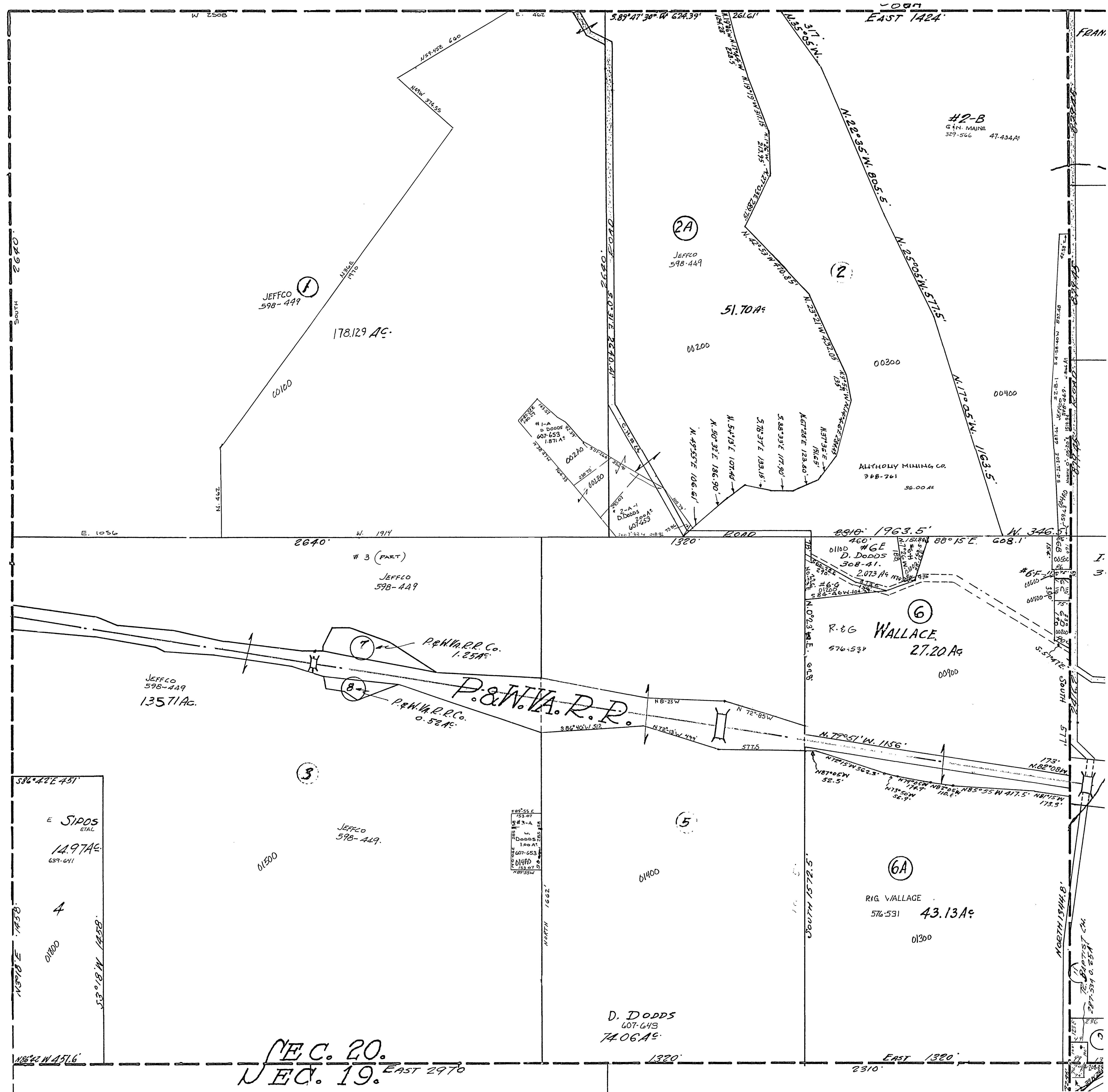
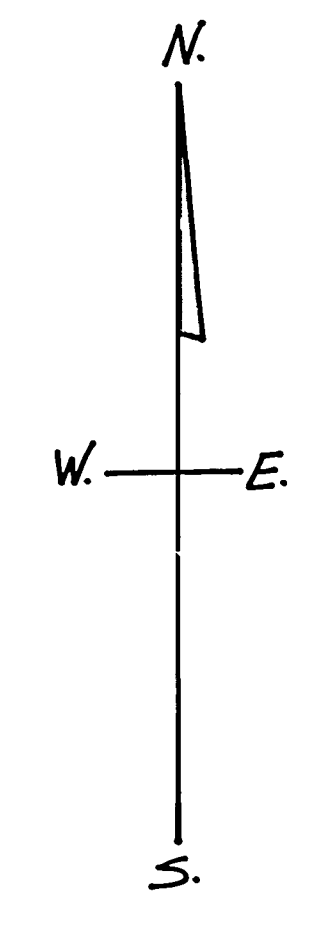


45-2000



*F M. BROWN 530-447 0.08 AC
 *G D. ELL JONES 551-368 0.36 AC
 *C JEFFCO 598-449 0.18 AC
 *G D. DODDS 607-645 0.03 AC
 *E D. DODDS 607-645 0.65 AC
 *B E. B. JONSON 0.51 AC



WAYNE TWP.
 SEC. 20, T. 9, R. 3.
 SCALE: 1" = 200'